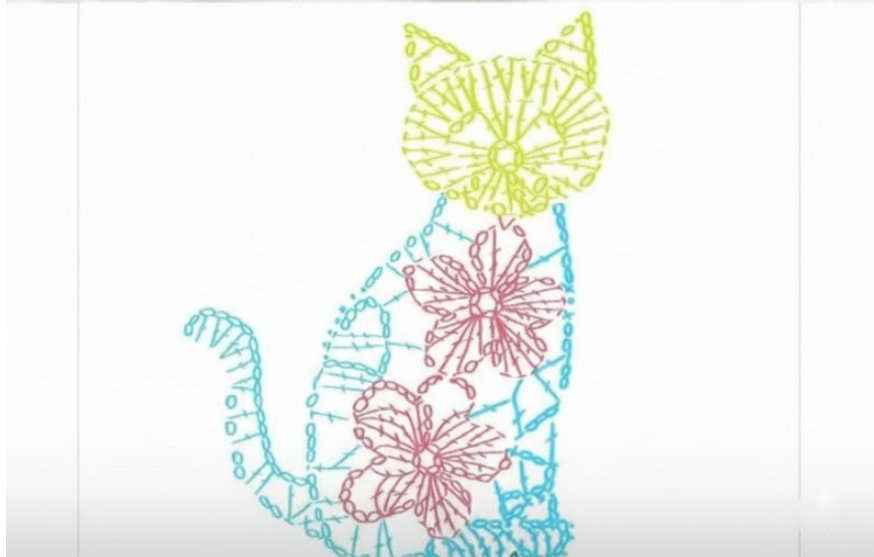


Crochet Lace Cat Appliqué Pattern

Photo & stitch diagram supplied by user — English pattern with step-by-step instructions



Materials

- Yarn: Fingering / lace weight yarn, or sock / cotton thread (approx. 20–30 g)
- Hook: 1.75 mm to 2.5 mm crochet hook (choose according to yarn and desired lace openness)
- Tapestry needle for weaving ends
- Scissors
- Blocking pins & mat (optional, recommended for lace shaping)

Abbreviations (US terms)

ch = chain

sl st = slip stitch

sc = single crochet

hdc = half double crochet

dc = double crochet

tr = treble (triple) crochet

dtr = double treble crochet

sp = space

sk = skip

st(s) = stitch(es)

() = repeat instructions inside parentheses as many times as required

Finished Size & Gauge (approx.)

Finished size will depend on yarn and hook. With fingering yarn and a 2.0 mm hook, the lace cat measures approximately 10–12 cm tall (photo reference). If using thicker yarn or larger hook, size will increase.

No strict gauge required — this is a decorative appliqué. Blocking after finishing is recommended to open lace motifs and set the shape.

Pattern Overview

This pattern recreates the lace cat appliqué composed of a circular head, a body made from stacked flower motifs (granny-flower clusters), a curved tail and a decorative chain-edge base. The instructions below guide you step-by-step to make each section and join them as you go.

Flower (6-petal) motif — make 2

These flower motifs form the body. Make two flowers (or more depending on desired length).

Instructions (worked in the round): Round 1: ch 6, sl st to first ch to form a ring. (OR magic ring) Round 2: ch 3 (counts as first dc), work 11 dc into ring. Join with sl st to top of ch-3. (12 dc) Round 3 (petals): *(ch 4, 3 tr into next st, ch 4, sl st into same st) — this creates a petal.* Repeat from * to * around to make 6 petals. Adjust petal height with ch counts to match photo. Fasten off and leave a long tail for joining.

Alternative petal: ch 5, (dc, tr, dc) into same st, ch 5, sl st into same st — repeat for 6 petals.

Head (circular motif)

The head is a round motif of tall stitches worked into a small center, with small triangular ears worked on top.

Head Instructions: 1. ch 6, sl st to first ch to form a ring (or use magic ring). 2. Round 1: ch 3 (counts as dc), work 11 dc into ring. Join with sl st to top of ch-3. (12 dc) 3. Round 2: ch 3, *dc in next st, ch 1* repeat around to create spokes; adjust to match diagram — you may use taller stitches (tr) to make the radial lace look like the photo. 4. Ears (make 2, worked on opposite sides of head as you attach or after): Attach yarn at ear location and work: ch 1, sc, hdc, 2 dc, hdc, sc, sl st (forming a small triangle). Fasten off and weave ends.

Tip: slightly stretch the head when blocking so the 'spokes' open evenly.

Body Construction & Joining the Motifs

The body is created by joining the flower motifs with connecting chains and short rows of dc and ch-sps to form a cat-silhouette curve.

1. Arrange the two flower motifs vertically, overlapping slightly. Use the long tails left from the flowers to whipstitch or sew them together through their centers or outer rounds.
2. Working from the top flower down, attach yarn to spine side and crochet connecting chains between flowers: ch 5–7 loops -> sl st into next flower edge to create an openwork strip (refer to diagram image).
3. With additional dc and ch spaces, shape the cat's body curve by increasing chain lengths on the outer edge and shortening on the inner edge. Use the photo as visual guidance.
4. Work a row of dc around the combined body to even edges: attach yarn at bottom, sc evenly around, filling gaps with ch-3 loops where large holes appear.

Tail & Decorative Base Edge

Tail: 1. Attach yarn where tail should begin along body edge. Ch 15 (or desired length for a curved tail), turn. 2. Row 1: sc in 2nd ch from hook and across to make a narrow tube. Optionally, work in 2 rows to make tail thicker. 3. Curve the tail by working a few short rows or by stitching it into a curved position while blocking.

Base Edge (decorative): 1. With the bottom edge of the body, work a row of ch-3 loops and dc clusters to form the scalloped base. 2. Example: *ch 3, sk 1, dc in next st, ch 3, sl st into base* — repeat for a scallop effect.

Assembly, Finishing & Blocking

1. Arrange all motifs and sections on a blocking mat to check shape. 2. Use pins to set curves (tail, ears) and to flatten motifs. Spray lightly with water and allow to dry. 3. Weave in all ends with a tapestry needle. Use the long tails to sew motifs securely where needed. 4. If you want a stiffer appliqué, mist lightly with a diluted fabric stiffener during blocking or use starch.

Optional: Add stitched eyes or small French knots for a nose. Use matching yarn for an invisible join or contrasting yarn for a decorative outline.

Photo & Stitch Diagram (user-supplied)



Quick Summary & FAQ

Quick Summary: - Make two 6-petal flower motifs for the body, one circular head, two small triangular ears, and a narrow tail. - Join motifs with chain loops and work a finishing row of dc/sc around edges. Block to shape.

FAQ: Q: Can I scale the pattern up or down? A: Yes — use thicker yarn and larger hook to increase size, or finer thread and smaller hook to reduce size.

Q: I don't like sewing motifs — can I crochet the body as one piece? A: Yes. Work flower clusters and continue crocheting connecting rows to form a single piece.